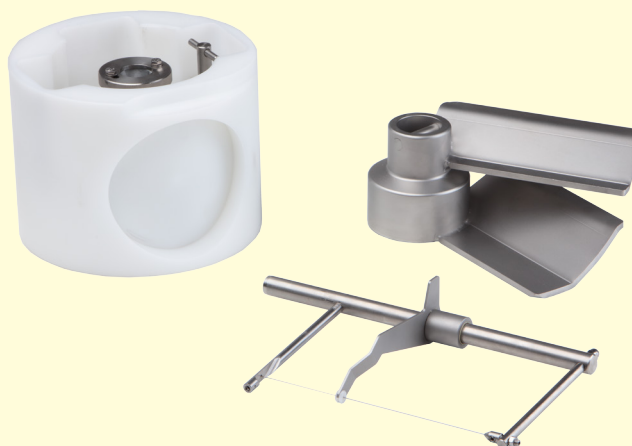




Known for Reliability Since 1921

The BIRO F1000N, Food/Patty Forming Machine was designed as an entry level machine for any size business. This NEW machine can deliver up to 1,300 cycles per hour. Featuring a ½ HP (.37Kw) motor for single speed operation. The machine also comes standard with a Stainless Steel Feed Paddle, a 22 pound (4.2 Gal.) hopper capacity, and an Auto-feed patty paper attachment with sample paper. The key feature of the F1000N is the compact footprint and ease of cleaning. Disassembly of the machine for cleaning is done all by hand, no tools required.

The mold die in the drum allows the operator to select product weights by changing the mold die depth (thickness) up to 1¼" (32 mm). You do not need different die cups, plates or tools each time you want to change weights. A large number of mold die shapes are available. They vary from the standard round shapes of different diameters, to special shapes such as square, oval, rectangle, fish, cutlet, heart, chicken nuggets, tree, pork chop, etc. See back side or your representative for more information.



F1000N

MODEL SPECIFICATIONS

Model: F1000N FOOD/PATTY FORMER

Motor:

HP	VOLTS	AMPS	HERTZ	PH	STATUS
½	115	3.0	60	1	STD

Construction: Stainless steel body, hopper, hopper cover.

Drum Mold: White Poly - Select one, Standard Single Round Hole Mold Drum (at no charge) from the Drum Mold selection below, Additional Standard or Non-Standard drum molds available at Extra Charge. *Contact your representative for more drum options. Note: Maximum product thickness of the 5.12" (130mm) diameter hole drum is .79" (20mm) thick.*

Hopper Capacity: 4.2 Gallons – 16 Liters (Approximately 22 pounds.)

Machine Output: Depending on product type, product temperature, and drum selection.







Approximately 1300 cycles per hour with single cavity drum.

Approximately 2600 cycles per hour with double cavity drum.

Standard Features: Operating/Service manual • Drum & Hopper Cover, Safety Switches • Fixed Speed • Stainless Steel Feed Paddle • 15 ¾" (390.5 mm) Conveyor Belt • Manual Wire Cleaner • 1- Single round hole drum, white poly (See Drum Mold below) • Auto-feed Paper Attachment (*accepts up to 5½" (139.7 mm) square paper, two packs included with machine. Approximately 1330 sheets.*) • Disassembly for cleaning without tools.

Options (Extra Cost): Longer (72") Conveyor Belt Assembly • Additional Patty Paper • Additional Drums.

Certifications: N.S.F., E.T.L.

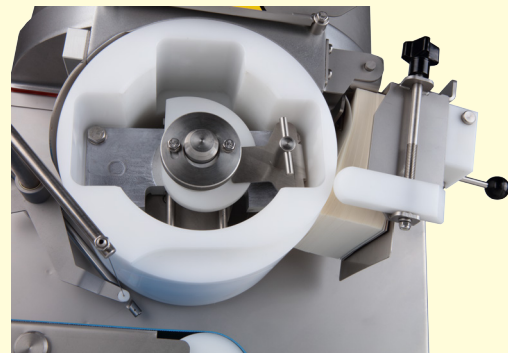
Drum Mold Selection			
Standard -Select One Single Round Hole Mold (DIA.)			
F9320000-70	2.76"	70mm	F9320000-110 4.33" 110mm
F9320000-90	3.54"	90mm	F9320000-115 4.53" 115mm
F9320000-100	3.94"	100mm	F9320000-120 4.72" 120mm
	F9320000-127	5.00"	127mm
Non - Standard / Optional			
	Single Round Hole Mold - EC		Square Single Hole - EC
F9320000-130	5.12" 130mm	F9320000-3-100100	100mm x 100mm 3.94" x 3.94"
	Round Double Hole - EC		Rectangle Single Hole - EC
F9320002-8-50	1.97" 50mm	F9320000-7-10070	100mm x 70mm 3.94" x 2.76"
	Double Rectangle Hole - EC		Oval Single Hole - EC
F9320002-2-9030	90mm x 30mm 3.54" x 1.18"	F9320000-1-10070	100mm x 70mm 3.94" x 2.76"
		F9320000-1-12080	120mm x 80mm 4.72" x 3.15"
Ask about other Shapes and Sizes not shown.		EC = Extra Cost	



Specialty drums available.
Contact Biro Manufacturing for details.

Dimensions & Weight:

Models:	F1000N
Dims. (Std. Conv.)	L22.8" (579mm) x W20.5" (519mm) x H23.3" (592mm)
Weight	126 lbs (57 kg)
Shipping Weight	168 lbs (76.2 kg) Approx.
Wood Box Dims.	L30" (762mm) x W27" (686mm) x H29" (737mm)



SHOWN
Product thickness adjustment cam,
Auto-feed paper attachment.

BIRO MANUFACTURING COMPANY
1114 WEST MAIN STREET
MARBLEHEAD, OH 43440-2099 U.S.A.

Phone: (419) 798-4451 www.birosaw.com
Fax: (419) 798-9106 sales@birosaw.com