



CL-5500 SERIES

Label Printing Scale

- Dual Range 30 lb & 60 lb Capacities
- 4,000 PLU's Standard Ingredients Messages
- Ethernet Built-in - Optional Wireless Networking
- 50 Standard Label Formats
- Legal for Trade - COC # 07-042A4
Measurement Canada - Pending

**Wireless
Networking
Available!**



CL-5500 SERIES | Label Printing Scale



Pole Model ▼

Standard Bench Model ▼



Hanging Model ▶

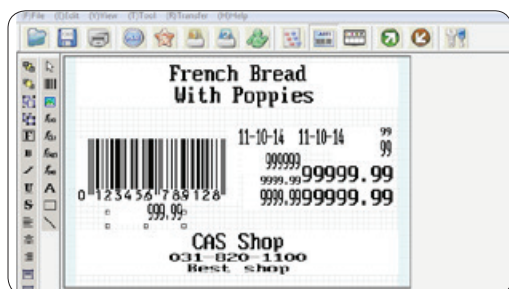


| | | | | | | |
|-------------|----------------|----------------|---------------|-----------------|--------------------|---------------|
| TOP SIRLOIN | GROUND PORK | GROUND TURKEY | VEAL RIB | VEAL LEG | PORK CUBES | PORK LEG |
| CUBE STEAK | GROUND CHICKEN | GROUND LAMB | VEAL SHANK | VEAL BREAST | PORK SPARERIB | PORK RIBLETS |
| CHUCK ROAST | GROUND VEAL | LAMB PATTIES | VEAL CUBES | VEAL CUBE STEAK | PORK LOIN TOP LOIN | PORK STIR FRY |
| BEEF CUBES | CHICKEN KABOB | CHICKEN SKEWER | VEAL FOR STEW | VEAL BONES | PORK SAUSAGE | SMOKED BACON |
| SHORT RIBS | SHRIMP SKEWER | BEEF SKEWER | LAMB LOIN | LAMB RIB CHOPS | DUCK | GEESE |

PLU Keys ▲



Label Cartridge ▲



Label Editor ▲

Features

Displays

The CL5500 is equipped with two high quality, easy to read LCD Displays. The operator side displays are used to show Tare Weight, Unit Weight, Unit Price and Total Price on the left. The display on the right is used to display PLU names, Scrolling Messages and Programming Menus.

Keyboard

The Double Click Call feature allows the operator to recall PLUs by double-clicking the speed key instead of having to use the shift key.

The standard Bench Model comes equipped with 96 (48 x 2) quick look up keys while the Pole and Hanging Models have 144 (72 x 2). These keys may also be programmed to be special function keys.

Printer & Label Cartridge

Achieve print speeds up to 100 mm/sec with a print resolution of 202 dpi. The removable label cartridge's simple design allows operators a method of quickly and easily reloading labels.

Label Formats

The CL5500 supports various die cut or continuous label sizes up to 200mm in length with the 50 preset label formats stored in its memory. With CL-Works Pro software, you can add up to 20 more custom label formats.



Customer Side Display ▲



CL Works Pro - PC Software



Data Editing

CL-Works Pro offers an easy-to-use data editing solution for businesses in supermarkets, grocery stores, delicatessens, and other retail markets. Manage all retail activities from PLUs to label formats.

Data Analysis

CL-Works Pro provides solution for analyzing sales data quickly, easily and accurately. The accumulated data would become an asset for users who want to get deeper insights from the data in order to make better predictions.

Compatibility

CL-Works Pro is compatible with all CL Series Label Printing Scales that use the most recent firmware. Control multiple scales remotely and efficiently manage your retail process.

- Easy PLU management control for all scales
- Simple PLU import & export
- Manage PLU's in multiple departments
- Supports WEP, WPA, & WPA2 Encryption

Networking Capabilities



- TCP/IP Communications
- 100 Base T Ethernet (Built-in)
- Optional IEEE 802.11g/n Wireless

Compatible Popular Scale Management Software Packages*

If you use either Applied Data Corporation's InterScale Scales Manager or Invatron's E-Plum to manage your scales, then you can easily add the CAS CL Family of Label Printing Scales to your network!*



*E-Plum Scale Management Software is owned and sold by Invatron Systems Corp. For more information, please visit www.invatron.com. InterScale Scales Manager is owned and sold by Applied Data Corporation. For more information, please visit www.applieddatacorp.com.

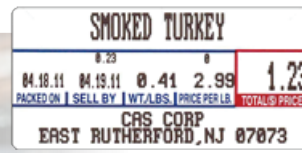


Labels

- 45 Standard Labels
- 20 Custom Labels

Available Printed Elements

- Ingredients
- Sales Discounts
- Nutrition Facts
- Multiple Languages
- Graphics
- And More!



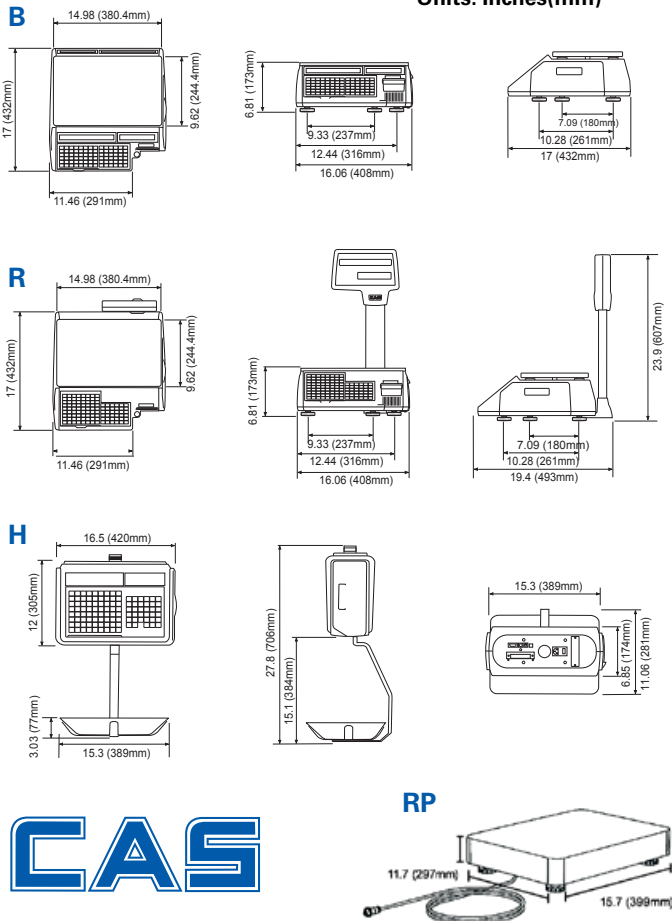
CL-5500 SERIES | Label Printing Scales

Features

- 30 lb and 60 lb Capacities - Dual Range
- 4,000 PLU's w/Direct Ingredient Messages
Max 2,100 Characters
- Speed Keys
CL5500B: 96 (48 keys x 2)
CL5500R: 144 (72 keys x 2)
CL5500H: 144 (72 keys x 2)
- 50 Standard Label Formats/Up to 20 Custom Labels
- High Speed Thermal Printer
- Flash ROM for easy firmware upgrades
- Multiple barcode formats
- English, Korean, Chinese, or Spanish Characters
- Same Menu Code System as the CL5000

DIMENSIONS

Units: Inches(mm)



CAS Corporation
99 Murray Hill Parkway
East Rutherford, NJ 07073
(800) 223-4227 • Fax (201) 933-9025
<http://www.cas-usa.com>

Specifications are subject to change for improvement without prior notice.

- Works with CL-Works Pro Software
PLU Editor - Label Editor - Keypad Editor
Compatible with Microsoft Windows® 7/8/10
- Approvals - NTEP COC # 07-042A4
Measurement Canada - Pending

Options

- Wireless Networking
- Remote Platform
- Full Body Protective Cover
- Label Cartridge
- Fish Pan

SPECIFICATIONS

| Model | CL5500-B | CL5500-R | CL5500-H |
|---------------------------------------|---|-------------------------------------|--|
| Weighing Capacity | 30 lb Capacity Dual Range 0 - 15 x 0.005 lbs / 15 - 30 x 0.01 lbs - 0 - 6 x 0.002 kg / 6 - 15 x 0.005 kg | | |
| | 60 lb Capacity Dual Range 0 - 30 x 0.01 lbs / 30 - 60 x 0.02 lbs - 0 - 15 kg x 5 g / 15 - 30 kg x 10g | | |
| Measurement Type | Load Cell | | |
| Display Type | LCD & Alphanumeric | | |
| Display Digit | 4/4/6/6 - Tare/Weight/Unit Pr/Total Pr | | |
| Weight Units | lb or kg | | |
| Printer | Thermal Print | | |
| Label Size | Width: 40mm ~ 60mm - Length: 30mm ~ 200mm | | |
| Barcode Formats | UPC-A, UPC13, EAN13, EAN13+5, I2of5, Code128, Code93, Codabar, and more | | |
| Interface | RS-232C / TCP/IP / USB | | |
| Keyboard Interface | PS/2 | | |
| Power Source | AC 100 ~ 240V, 50/60Hz | | |
| Operating Temp | -10°C ~ 40°C / 14°F ~ 104°F | | |
| Platter Size (in/mm) (W) x (D) | 15 x 9.6 381 x 244 | 15 x 9.6 381 x 244 | 15.3 x 11.06 389 x 281 |
| Dimensions (in/mm) (W) x (D) x (H) | 16 x 17 x 6.8 406.4 x 432 x 173 | 16 x 17 x 23.9 406.4 x 432 x 607 | 16.5 x 11.06 x 27.8 420 x 281 x 706 |
| Product Weight | 24 lbs (10.9 kg) | 25 lbs (11.3 kg) | 31.3 lbs (14.2 kg) |
| MODEL | CL5500-RP Remote Platform | | |
| Max. Capacity | 30 kg / 60 lb | | |
| Weighing Capacity | Dual Range 0 - 15 x 0.05 lbs / 30 - 60 x 0.1 lbs 0 - 15 x 0.002 kg / 15 - 30 x 0.005 kg | | |
| Platter Size | 15.75 x 11.8 x 3.4(H) 400 x 300 x 86(H) | | |

